

*Local expertise with powerful national marketing*

**EDWARDS**  
ESTATE AGENTS



**BRISTOL & WEST HOUSE**

**BOURNEMOUTH, BH1 1BL**



AN OUTSTANDING  
THIRD FLOOR  
APARTMENT IN  
BOURNEMOUTH TOWN

# BRISTOL & WEST HOUSE

- BEAUTIFUL TOWN CENTRE APARTMENT
- TWO DOUBLE BEDROOMS
- TWO CONTEMPORARY BATH/SHOWER ROOMS

An outstanding third floor apartment with fantastic elevated views over Richmond Hill from its beautiful feature curved windows. This stylish and very spacious apartment offers two double bedrooms and two contemporary style bath/shower rooms.

Bristol & West House is probably one of Bournemouth's most recognised buildings, commanding an elevated position on Richmond Hill with views down into Bournemouth's bustling Square.

A modern fusion of clean, contemporary style and classic Art Deco elegance was the remit of the developers from the start. Their plan; to carefully restore the exterior to its former glory and create a cool stylish interior, something they have

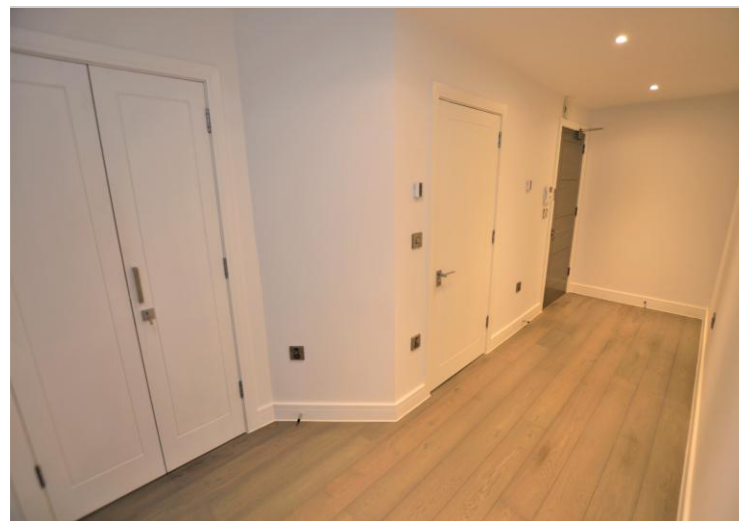
- SPACIOUS OPEN PLAN LIVING AREA
- INTEGRATED KITCHEN APPLIANCES
- HIGH SPECIFICATION THROUGHOUT
- ART DECO ENTRANCE FOYER

successfully achieved.

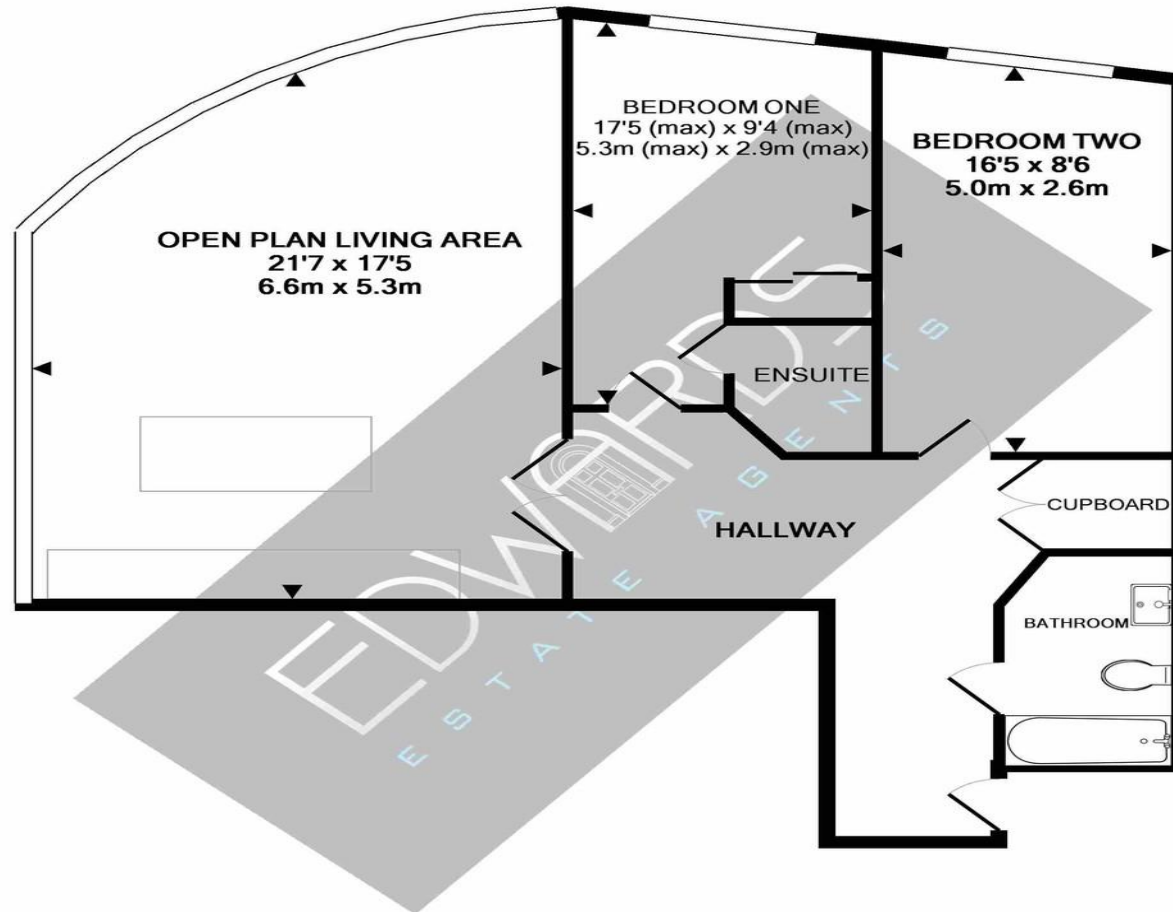
From the stylish entrance foyer with its original terrazzo flooring and lift, you step out into the heart of Bournemouth's cosmopolitan town centre with its eclectic mix of shops, bars and restaurants and beautiful award winning ornamental gardens the award winning golden sandy bathing beach acystal blue seas our beautiful town is famous for.

With a real focus on finish, the apartments at Bristol & West will offer a modern environment from which to enjoy and explore the exciting town and stunning coast.

Approximate Rental Figures: £1,200 - £1,250 per month



# Local expertise with powerful national marketing



TOTAL APPROX. FLOOR AREA 805 SQ.FT. (74.7 SQ.M.)

Whilst every attempt has been made to ensure the accuracy of the floor plan contained here, measurements of doors, windows, rooms and any other items are approximate and no responsibility is taken for any error, omission, or mis-statement. This plan is for illustrative purposes only and should be used as such by any prospective purchaser. The services, systems and appliances shown have not been tested and no guarantee as to their operability or efficiency can be given  
Made with Metropix ©2019

**Bournemouth Sales**

[www.edwardstates.com](http://www.edwardstates.com) • 01202 744944 • [bournemouth@edwardstates.com](mailto:bournemouth@edwardstates.com)

**EDWARDS**  
ESTATE AGENTS

These particulars are believed to be correct but their accuracy is not guaranteed and they do not form part of any contract. Whilst every effort is made to ensure the accuracy of these details, it should be noted that the above measurements are approximate only. Floorplans are for representation purposes only and prepared according to the RICS Code of Measuring Practice by our floorplan provider. Therefore, the layout of doors, windows and rooms are approximate and should be regarded as such by any prospective purchaser. Any internal photographs are intended as a guide only and it should not be assumed that any of the furniture/ fittings are included in any sale. Where shown, details of lease, ground rent and service charge are provided by the vendor and their accuracy cannot be guaranteed, as the information may not have been verified and further checks should be made either through your solicitor/conveyancer or by referring to the home information pack for this property. Where appliances, including central heating, are mentioned, it cannot be assumed that they are in working order, as they have not been tested. Please also note that wiring, plumbing and drains have not been checked.