

Local expertise with powerful national marketing

EDWARDS
ESTATE AGENTS

BRISTOL & WEST HOUSE

BOURNEMOUTH, DORSET, BH1





BRISTOL & WEST HOUSE

- FANTASTIC TOWN CENTRE APARTMENT
- TWO DOUBLE BEDROOMS
- WOODEN FLOORING & UNDERFLOOR HEATING
- MODERN BATH / SHOWER ROOMS
- WALKING DISTANCE TO BOURNEMOUTH BEACH
- IMPRESSIVE SPECIFICATION THROUGHOUT

A stunning, two bedroom second floor apartment located in this iconic Art Deco building right in the heart of Bournemouth town centre.

Open plan living spaces made for entertaining blend into superbly appointed kitchens with quartz worktops and integrated Smeg appliances. Luxuriously appointed bathrooms and en-suites are fully tiled and are designed for taking your time.

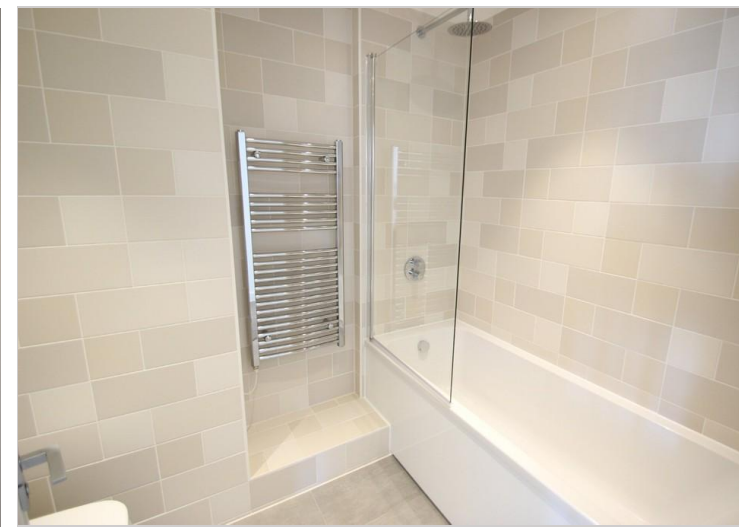
Engineered wood flooring flows throughout the living areas and the feature windows of the apartments emulate the Art Deco ambience. Underfloor heating and high-quality lighting throughout embodies the indulgent feel of the apartments.

From the stylish entrance foyer with its original terrazzo flooring and lift, you step out into the heart of Bournemouth's cosmopolitan town centre with its eclectic mix of shops, bars and restaurants and beautiful award winning ornamental gardens.

Just an 800 metre walk through the historic gardens is the award winning golden sandy bathing beach and crystal blue seas our beautiful town is famous for.

With a real focus on finish, the apartments at Bristol & West will offer a modern environment from which to enjoy and explore the exciting town and stunning coast.

EPC C



Local expertise with powerful national marketing



Bournemouth Sales

• www.edwardstates.com • 01202 744944 • bournemouth@edwardstates.com

EDWARDS
ESTATE AGENTS

These particulars are believed to be correct but their accuracy is not guaranteed and they do not form part of any contract. Whilst every effort is made to ensure the accuracy of these details, it should be noted that they are merely approximate only. Floorplans are for representation purposes only and prepared according to the RICS Code of Measuring Practice by our floorplan provider. Therefore, the layout of doors, windows and rooms are not precise and should be regarded as such by any prospective purchaser. Any internal photographs are intended as a guide only and it should not be assumed that any of the furniture/ fittings are included in any sale. Where shown, details of lease, ground rent and service charge are provided by the vendor and their accuracy cannot be guaranteed, as the information may not have been verified and further checks should be made either through your solicitor/conveyancer or by referring to the lease information pack for this property. Where appliances, including central heating, are mentioned, it cannot be assumed that they are in working order, as they have not been tested. Please also note that wiring, plumbing and drains have not been checked.