

*Local expertise with powerful national marketing*

EDWARDS  
ESTATE AGENTS



EAST COAST

BOURNEMOUTH, DORSET, BH2 5EW





EDWARDS ARE  
DELIGHTED TO OFFER  
FOR SALE THIS  
BEAUTIFUL TWO



# EAST COAST

- PANORAMIC SEA VIEWS
- MODERN THROUGHOUT
- SECURE UNDERGROUND PARKING
- TWO DOUBLE BEDROOMS
- TWO BATHROOMS
- TWO BALCONIES

Located with in close proximity to Bournemouth town centre and a stones throw away from the beach is 'Coast' one of Bournemouth's landmark developments.

This apartment boasts a premium finish and contemporary style throughout. The kitchen is open plan with the dining room and living room and gives access to the first balcony. From the living room and balcony are beautiful views of the sea.

The master bedroom is a spacious double with an added benefit of fitted wardrobes, and a second balcony. The apartment also has a second double bedroom and a bathroom consisting of a WC, sink and bath/shower.

The property also benefits from a lift in the block and a parking space in the gated underground parking, as well as a bike store.

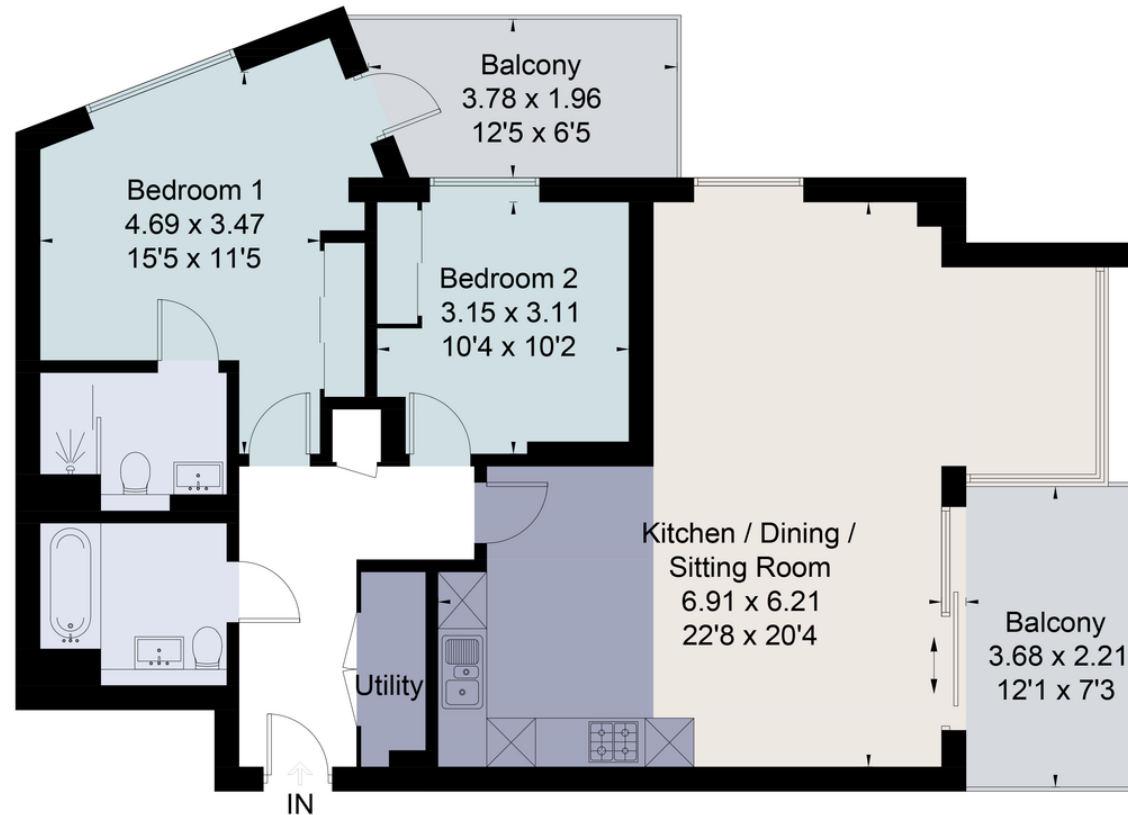
Bournemouth's miles of sandy beaches is at your fingertips, offering sunny days at the beach or a winter walk along the promenade. Also a stone throw away is Bournemouth Town Centre with its parade of shops, perfect for some retail therapy, multiple restaurants for fantastic dining, and Bournemouth's new BH2 complex. Access to the rest of the UK for a short break away is easy with Bournemouth Train Station only 2 miles away with regular routes across the South West covering Reading, Plymouth, Portsmouth and London Waterloo.

EPC D



# Local expertise with powerful national marketing

Approximate Area = 86.2 sq m / 928 sq ft  
For identification only. Not to scale.  
© Fourwalls Group



Surveyed and drawn in accordance with the International Property Measurement Standards (IPMS 2: Residential)  
fourwalls-group.com 248782

## Bournemouth Sales

• [www.edwardestates.com](http://www.edwardestates.com)

01202 744944 • [lowerparkstone@edwardestates.com](mailto:lowerparkstone@edwardestates.com)

**EDWARDS**  
ESTATE AGENTS

These particulars are believed to be correct but their accuracy is not guaranteed and they do not form part of any contract. Whilst every effort is made to ensure the accuracy of these details, it should be noted that the above measurements are approximate only. Floorplans are for representation purposes only and prepared according to the RICS Code of Measuring Practice by our floorplan provider. Therefore, the layout of doors, windows and rooms are approximate and should be regarded as such by any prospective purchaser. Any internal photographs are intended as a guide only and it should not be assumed that any of the furniture/ fittings are included in any sale. Where shown, details of lease, ground rent and service charge are provided by the vendor and their accuracy cannot be guaranteed, as the information may not have been verified and further checks should be made either through your solicitor/conveyancer or by referring to the home information pack for this property. Where appliances, including central heating, are mentioned, it cannot be assumed that they are in working order, as they have not been tested. Please also note that wiring, plumbing and drains have not been checked.