

*Local expertise with powerful national marketing*

EDWARDS  
ESTATE AGENTS



PEGASUS LODGE, NEW ROAD

FERNDOWN, BH22 8EJ





- TOWN CENTRE LOCATION
- EXCLUSIVE RETIREMENT DEVELOPMENT
- FIRST FLOOR TWO DOUBLE BEDROOMS
- STAIR & LIFT ACCESS
- LUXURIOUS EN SUITE BATHROOM
- SEPARATE SHOWER ROOM
- DUAL ASPECT LOUNGE
- STYLISH KITCHEN WITH WINDOW



# GUIDE PRICE £250,000

The apartment is located on the first floor of the ever-popular Pegasus Lodge and can be accessed via a lift or stairs. The apartment is extremely spacious with a long entrance hall and doors leading to all rooms. Due to the tasteful, neutral decoration throughout there is an excellent first impression that the apartment has been enjoyed and well looked after by the current owner. Towards the rear of the apartment is an exceptionally light and bright double aspect living room which enjoys views to the front aspect of the building down Victoria Road towards Ferndown Town Centre.

Adjacent to the living room is a well-appointed kitchen which has been fully fitted with a range of wall and base units with roll edge work surfaces over, the kitchen has been fitted to include an electric fan assisted oven, four ring electric hob with matching extractor over, a in-built fridge freezer and washing machine. In addition to the living accommodation there are two very generous double bedrooms.

The impressively spacious master bedroom benefits from a range of fitted wardrobes and a well-appointed en-suite bathroom with full bath and shower over along with a low-level WC. Bedroom two is also a very generous sized double bedroom which has a pleasant outlook and is also served by an additional shower room towards the front of the apartment.

Outside the property you can find restricted residents car parking which will need to be applied for as well as range of further visitor's car parking spaces.

There are beautifully well maintained, communal grounds to enjoy sat outside in the summer as well as having a delightful communal lounge. Pegasus Lodge is a purpose-built block for the over 55's which also benefits from having a security entrance phone system and a part-time House Manager. When the House Manager is unavailable the apartments also have a 24-hour care line.

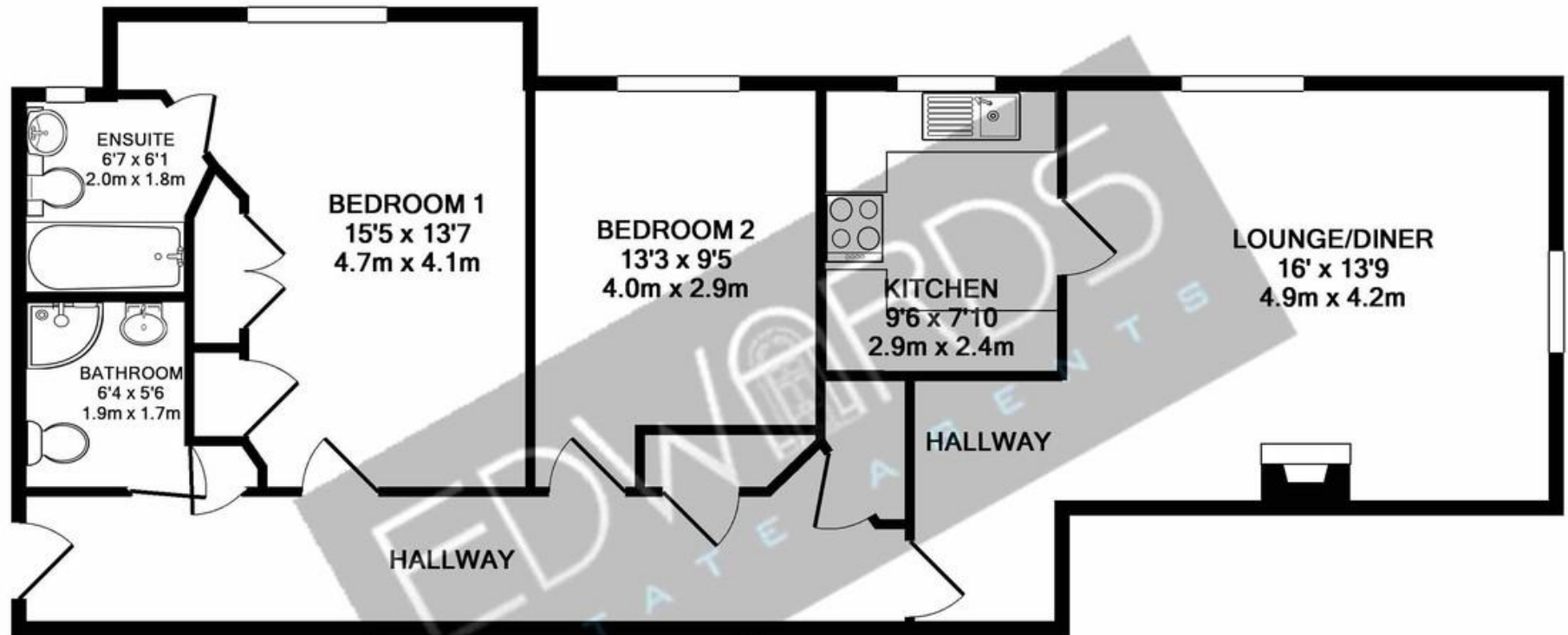
Leasehold is 125 years from 2000 and service charge TBC



Communal Lounge



*Local expertise with powerful national marketing*



TOTAL APPROX. FLOOR AREA 844 SQ.FT. (78.4 SQ.M.)

Whilst every attempt has been made to ensure the accuracy of the floor plan contained here, measurements of doors, windows, rooms and any other items are approximate and no responsibility is taken for any error, omission, or mis-statement. This plan is for illustrative purposes only and should be used as such by any prospective purchaser. The services, systems and appliances shown have not been tested and no guarantee as to their operability or efficiency can be given

Made with Metropix ©2019

## Ferndown Sales Office

404 Ringwood Road, Ferndown, Dorset, BH22 9AU • [www.edwardestates.com](http://www.edwardestates.com)

01202 855595 • [info@edwardestates.com](mailto:info@edwardestates.com)

**EDWARDS**  
ESTATE AGENTS

These particulars are believed to be correct but their accuracy is not guaranteed and they do not form part of any contract. Whilst every effort is made to ensure the accuracy of these details, it should be noted that the above measurements are approximate only. Floorplans are for representation purposes only and prepared according to the RICS Code of Measuring Practice by our floorplan provider. Therefore, the layout of doors, windows and rooms are approximate and should be regarded as such by any prospective purchaser. Any internal photographs are intended as a guide only and it should not be assumed that any of the furniture/ fittings are included in any sale. Where shown, details of lease, ground rent and service charge are provided by the vendor and their accuracy cannot be guaranteed, as the information may not have been verified and further checks should be made either through your solicitor/conveyancer or by referring to the home information pack for this property. Where appliances, including central heating, are mentioned, it cannot be assumed that they are in working order, as they have not been tested. Please also note that wiring, plumbing and drains have not been checked.