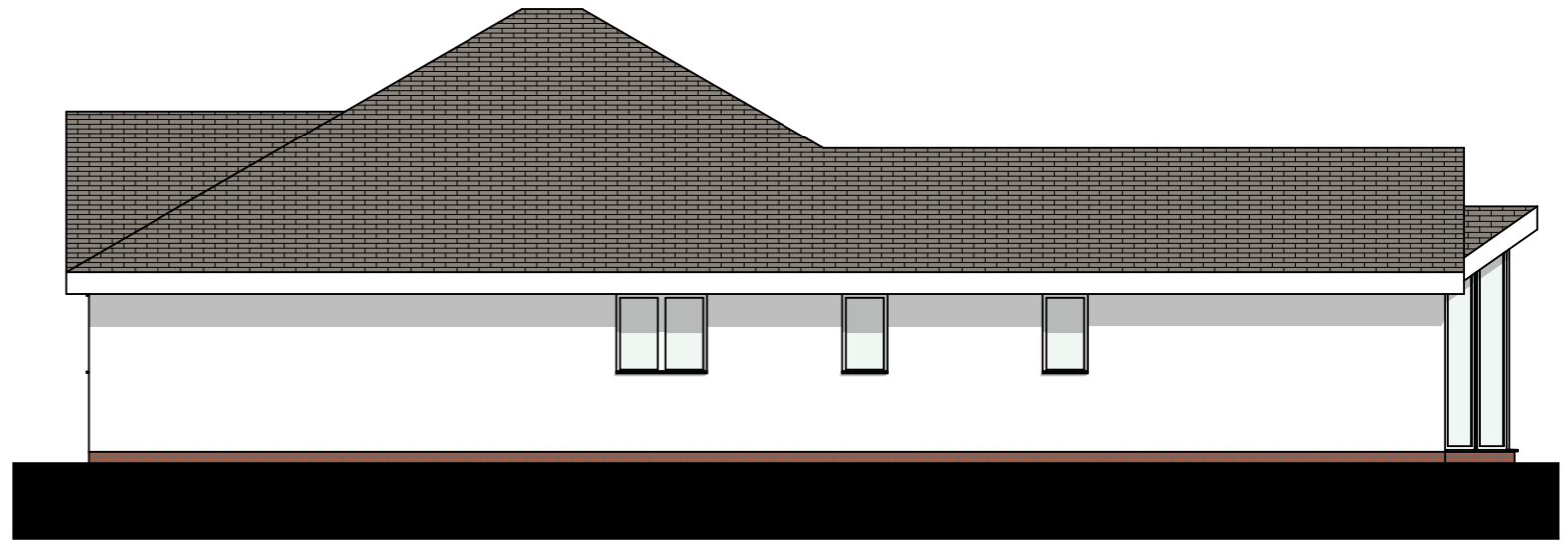


Unit 5 South West (Front) Elevation

1:100



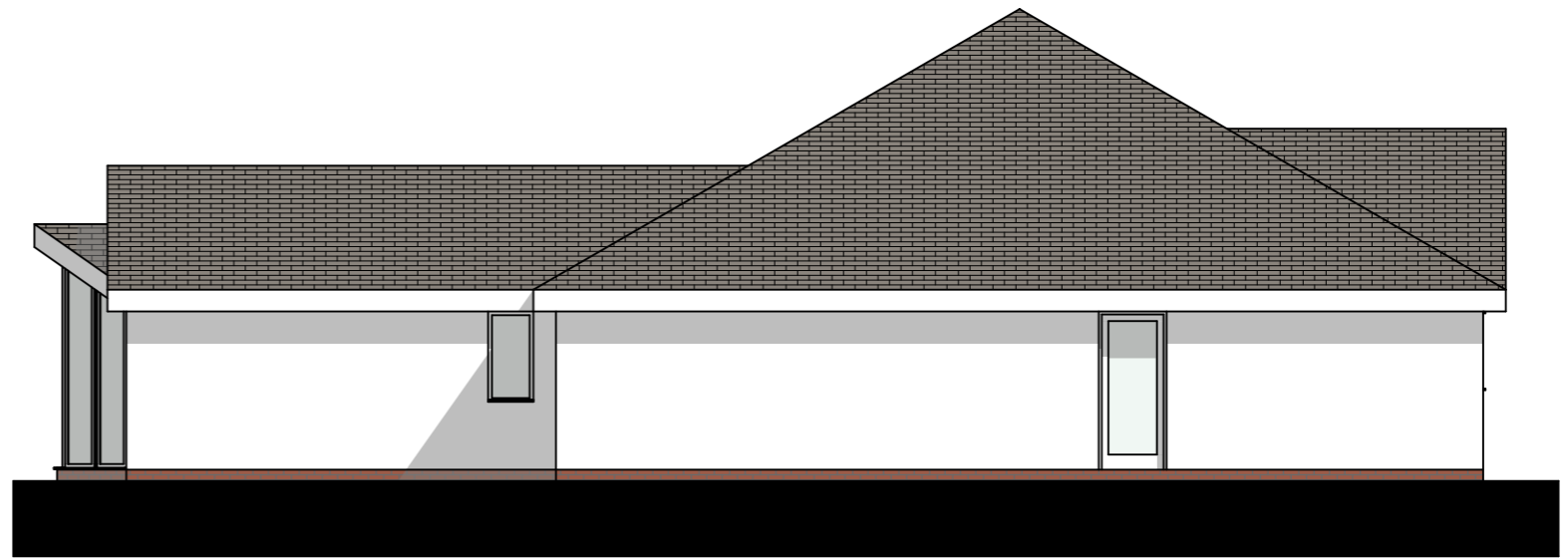
Unit 5 North West (Side) Elevation

1:100



Unit 5 North East (Rear) Elevation

1:100

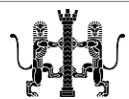


Unit 5 South East (Side) Elevation

1:100



1:100



Proposed Units on land to rear of
21 Woodlinken Drive, Verwood BH31 6BW

Drawing:
Proposed
Unit 5
Elevations

DWG number:
4319/14

Scale: @A3
1:100

Revision:
E
11/01/21

Drawn by:
L. Evans

Checked by:
Brian Nicholls

Brian Nicholls Architects
Ltd Architecture Planning
Design and Development
Consultant