

Local expertise with powerful national marketing

EDWARDS
ESTATE AGENTS

THE LINKS, 8 QUEENS PARK WEST DRIVE
BOURNEMOUTH, BH8 9BY



GUIDE PRICE £275,000

- Two Bedroom Ground Floor Flat
- Private Patio Area
- Allocated Parking
- Garage
- Stunning Communal Gardens
- Well Maintained Block
- Share Of Freehold
- Opposite Queens Park Golf Course
- Easy access to Wessex Way
- Beautiful views

The main entrance to the block is located at the rear of the building via the driveway leading to the allocated parking and garage.

When entering the property there are storage cupboards in the hallway and doors to all principle rooms leading off.

The lounge is a light and airy spacious room, with sliding doors leading to the patio which overlooks the communal gardens and the stunning Queens Park Golf Course. This room is finished with modern décor and wood effect flooring.

The kitchen has a large selection of wall and floor mounted units, oven, hob and extractor fan. Space for a fridge/freezer.

Bedroom one is a large double overlooking the communal garden with views to the the Golf Course.

Bedroom two is a good size double which has been newly carpeted and decorated.

There is a separate WC and a bathroom that has been adapted as a wet room for the disabled.

The grounds are superb with a selection of mature shrubs and the wonderful lawned area. There is a private residents' gate that offers easy access to the golf course and the park. The apartment has one allocated parking space and a garage.

Council Tax Band - C

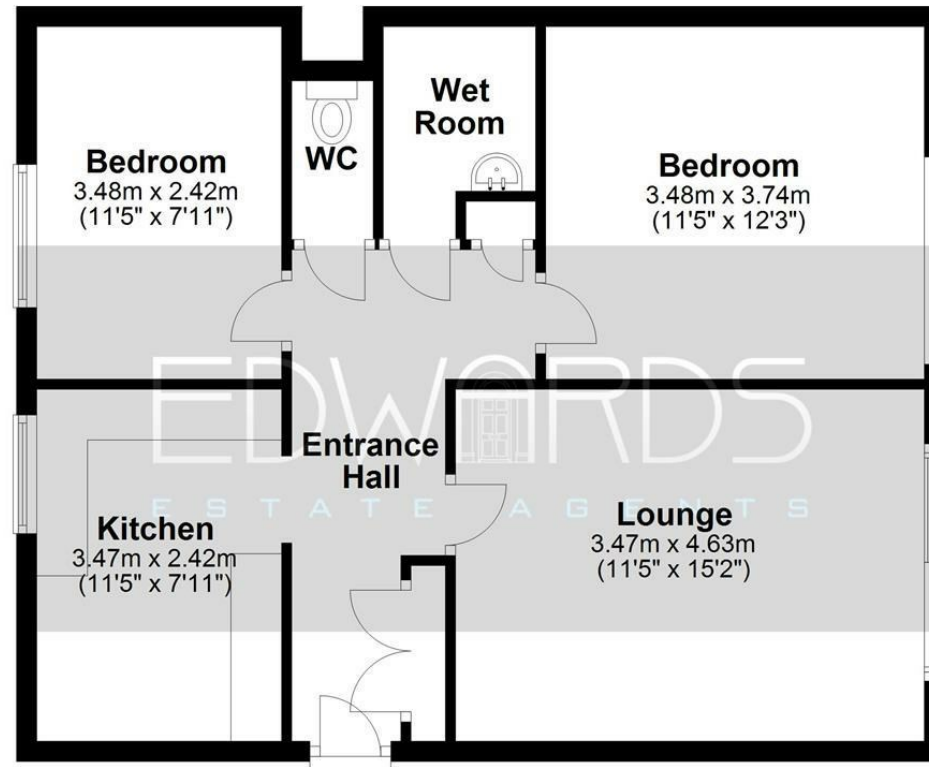
Lease 983 years remaining

Share of Freehold





Ground Floor



Bournemouth Energy Floor Plans are provided for illustration/identification purposes only. Not drawn to scale, unless stated and accept no responsibility for any error, omission or mis-statement. Dimensions shown are to the nearest 7.5 cm / 3 inches. Total approx area shown on the plan may include any external terraces, balconies and other external areas. To find out more about Bournemouth Energy please visit www.bournemouthenergy.co.uk (Tel: 01202 556006)
Plan produced using PlanUp.

These particulars are believed to be correct but their accuracy is not guaranteed and they do not form part of any contract. Whilst every effort is made to ensure the accuracy of these details, it should be noted that the above measurements are approximate only. Floorplans are for representation purposes only and prepared according to the RICS Code of Measuring Practice by our floorplan provider. Therefore, the layout of doors, windows and rooms are approximate and should be regarded as such by any prospective purchaser. Any internal photographs are intended as a guide only and it should not be assumed that any of the furniture/ fittings are included in any sale. Where shown, details of lease, ground rent and service charge are provided by the vendor and their accuracy cannot be guaranteed, as the information may not have been verified and further checks should be made either through your solicitor/conveyancer or by referring to the home information pack for this property. Where appliances, including central heating, are mentioned, it cannot be assumed that they are in working order, as they have not been tested. Please also note that wiring, plumbing and drains have not been checked.

Local expertise with powerful national marketing



Ferndown, Dorset BH22 9AU

01202 855595

www.edwardstates.co.uk