

*Local expertise with powerful national marketing*

EDWARDS  
ESTATE AGENTS

LEIGH ROAD

WIMBORNE, BH21 2BZ

FINE & COUNTRY  
Homes from Edwards



# GUIDE PRICE £420,000

---

- OUTSTANDING DESIGN
- OPEN PLAN LIVING SPACE
- SEMI DETACHED FAMILY HOME
- DESIGNED OVER THREE FLOORS
- GENEROUS OPEN PLAN KITCHEN
- FOUR BEDROOMS
- EN SUITE
- GARDEN
- BEAUTIFUL RIVERSIDE WALKS CLOSE BY
- 10 YEAR GUARANTEE

An ideal family home designed over three floors featuring a generous open-plan kitchen with dining and family areas, and a fourth bedroom/study are on the ground floor.

On the first floor oversized windows fill the lounge and main bedroom with light, giving them a bright and airy feeling.

Upstairs there is a further double bedroom, a single bedroom and a family bathroom.

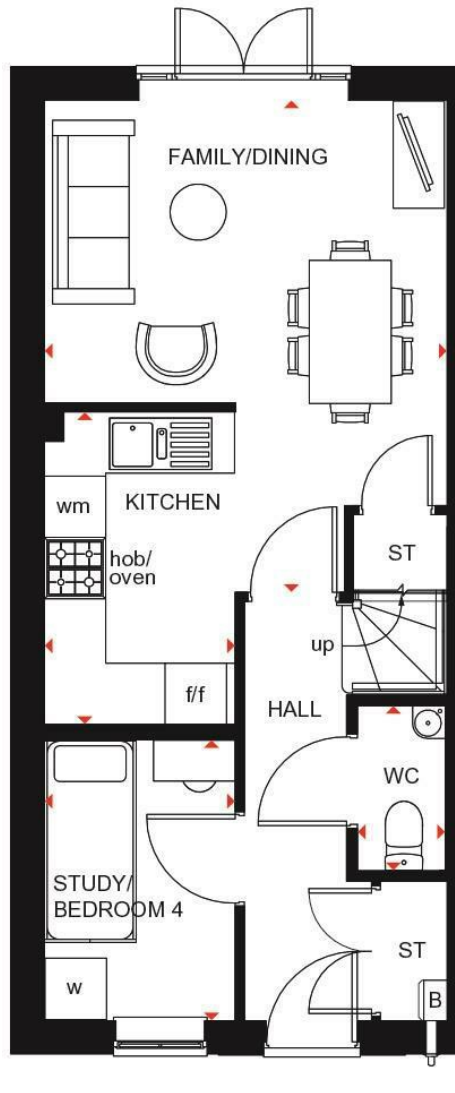
Energy Performance Rating B

Council Tax Band TBC









These particulars are believed to be correct but their accuracy is not guaranteed and they do not form part of any contract. Whilst every effort is made to ensure the accuracy of these details, it should be noted that the above measurements are approximate only. Floorplans are for representation purposes only and prepared according to the RICS Code of Measuring Practice by our floorplan provider. Therefore, the layout of doors, windows and rooms are approximate and should be regarded as such by any prospective purchaser. Any internal photographs are intended as a guide only and it should not be assumed that any of the furniture/ fittings are included in any sale. Where shown, details of lease, ground rent and service charge are provided by the vendor and their accuracy cannot be guaranteed, as the information may not have been verified and further checks should be made either through your solicitor/conveyancer or by referring to the home information pack for this property. Where appliances, including central heating, are mentioned, it cannot be assumed that they are in working order, as they have not been tested. Please also note that wiring, plumbing and drains have not been checked.

*Local expertise with powerful national marketing*



Ferndown, Dorset BH22 9AU

01202 855595

[www.fineandcountry.com](http://www.fineandcountry.com)

