

Local expertise with powerful national marketing

EDWARDS
ESTATE AGENTS

RYAN CLOSE

FERNDOWN, BH22 9TP



OFFERS OVER £600,000

Enjoying a QUIET CUL-DE-SAC location close to WOODLAND WALKS and approximately one mile from FERNDOWN TOWN CENTRE is this SPACIOUS, three double bedroom DETACHED BUNGALOW.

From the entrance porch and internal 'L' shaped reception hall with generous built-in storage cupboards.

Double doors open into the living room with feature fireplace. Sliding doors give access through to the conservatory at the rear which has beautiful views over the rear garden and patio. From the living room, bi-folding doors provide access to the formal dining room also overlooking the rear garden.

Located at the side, the kitchen has a comprehensive range of units and separate utility room.

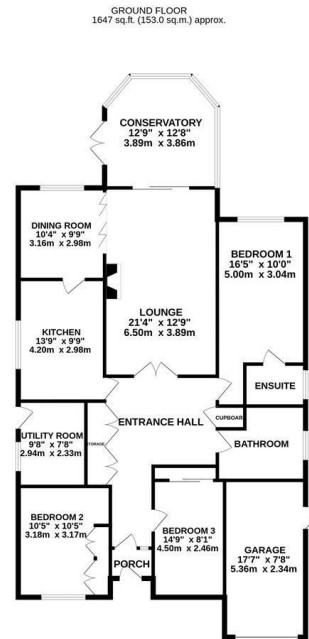
All three bedrooms are doubles with built-in wardrobes. The master also has the benefit of a three piece en-suite shower room.

Being of a westerly facing direction and laid mainly to patio and ornate flower borders, the rear garden is great for evening sunsets. There is also a greenhouse and shed. At the front, there is parking for multiple vehicles on the block paved driveway and garage with electrically operated roller door, power, light and pedestrian side door.

Energy Performance Rating D
Council Tax Band E



Local expertise with powerful national marketing



TOTAL FLOOR AREA: 1647 sq.ft. (153.0 sq.m.) approx.
Whilst every attempt has been made to ensure the accuracy of the floorplan contained here, measurements of such, windows, doors and any other details are approximate and no responsibility is taken for any error, omission or misstatement. This plan is for illustrative purposes only and should be used as a guide only for any prospective purchaser. The services, systems and appliances shown have not been tested and no guarantee can be given as to their condition or efficiency at the time.
Made with Lettoplan 12008

Ferndown Office

404 Ringwood Road, Ferndown, Dorset, BH22 9AU • www.edwardstates.com
01202 855595

EDWARDS
ESTATE AGENTS

These particulars are believed to be correct but their accuracy is not guaranteed and they do not form part of any contract. Whilst every effort is made to ensure the accuracy of these details, it should be noted that the above measurements are approximate only. Floorplans are for representation purposes only and prepared according to the RICS Code of Measuring Practice by our floorplan provider. Therefore, the layout of doors, windows and rooms are approximate and should be regarded as such by any prospective purchaser. Any internal photographs are intended as a guide only and it should not be assumed that any of the furniture/ fittings are included in any sale. Where shown, details of lease, ground rent and service charge are provided by the vendor and their accuracy cannot be guaranteed, as the information may not have been verified and further checks should be made either through your solicitor/conveyancer or by referring to the home information pack for this property. Where appliances, including central heating, are mentioned, it cannot be assumed that they are in working order, as they have not been tested. Please also note that wiring, plumbing and drains have not been checked.