

Local expertise with powerful national marketing

EDWARDS
ESTATE AGENTS



DUKES DRIVE
DORCHESTER, DT2 8GT



ASKING PRICE £615,000

- QUALITY DETACHED CHARACTER FAMILY HOME
- DESIRABLE VILLAGE OF PUDDLETOWN
- HIGH SPECIFICATION OF FIXTURES AND FITTINGS
- SUPERB FITTED KITCHEN
- CO-ORDINATED UTILITY ROOM
- FOUR BEDROOMS
- CONTEMPORARY BATHROOM, ENSUITE & CLOAKROOM
- LANDSCAPED GARDENS
- GARAGE & PARKING
- GOOD ROAD NETWORK ACCESS

Bridleways is a delightful NEWLY CONSTRUCTED collection of QUALITY CHARACTER HOMES, nestled on the outskirts of the pretty, DESIRABLE VILLAGE of Puddletown in the heart of the DORSET COUNTRYSIDE, yet within easy access of the County town of Dorchester and the many amenities it offers.



The A31 provides good road network access to Devon and Cornwall to the west and Poole, Bournemouth, Southampton and beyond eastwards. A mainline rail station is located at Dorchester, for express trains to London and there are airports at Bournemouth, Southampton and Exeter. And of course the world renowned Heritage Jurassic coastline is just a short drive to the south with superb beaches and stunning seascapes!

Puddletown itself is a strong community set within the rolling hills of the county and offers excellent local amenities including well regarded first and middle schools, with senior state schools in Dorchester, as well as a good selection of public schools throughout the locality.

The development offers a selection of three and four bedroom, detached and semi-detached family homes, each equipped with a high specification of fixtures and fittings throughout, along with individuality and customised to meet the high standards for which this award winning company is well known.

Notable features include:

Superb, fully fitted kitchens with quartz worktops and a generous range of integrated appliances including, oven, hob and extractor, fridge/freezer, dishwasher and washer/dryer.

Co-ordinated utility room with sink and storage (where applicable).

Bathrooms, ensuites and cloakrooms fitted with contemporary white sanitaryware and heated towel rails to bathroom and ensuites.

Porcelanosa floor tiles to bathroom and ensuites.

Amtico flooring to kitchen, dining room, utility and cloakroom.

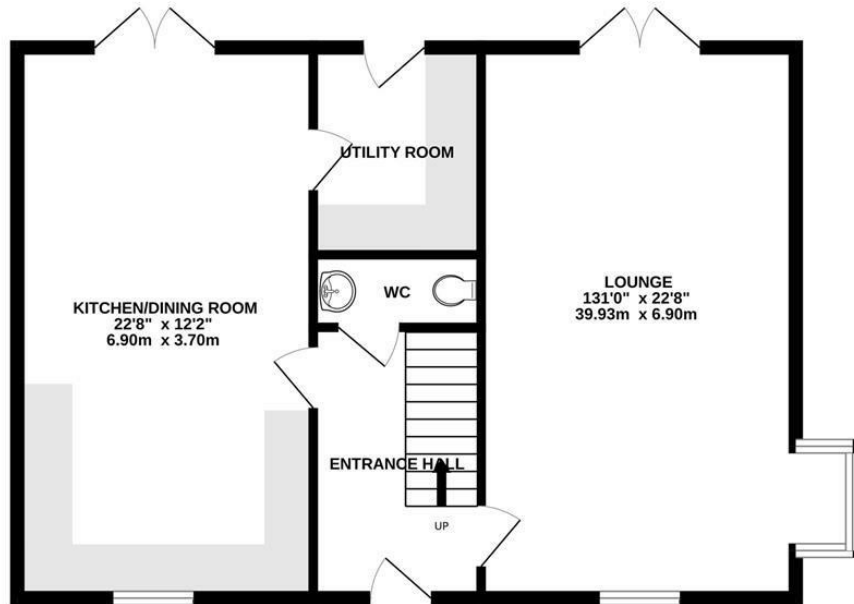
Chrome door furniture and sockets throughout.

Externally, each property benefits from a garage and driveway parking and neatly landscaped front and rear gardens with paved rear patio, planted borders and trellis and on selected properties - pergolas over the patio. There is also an outside tap.

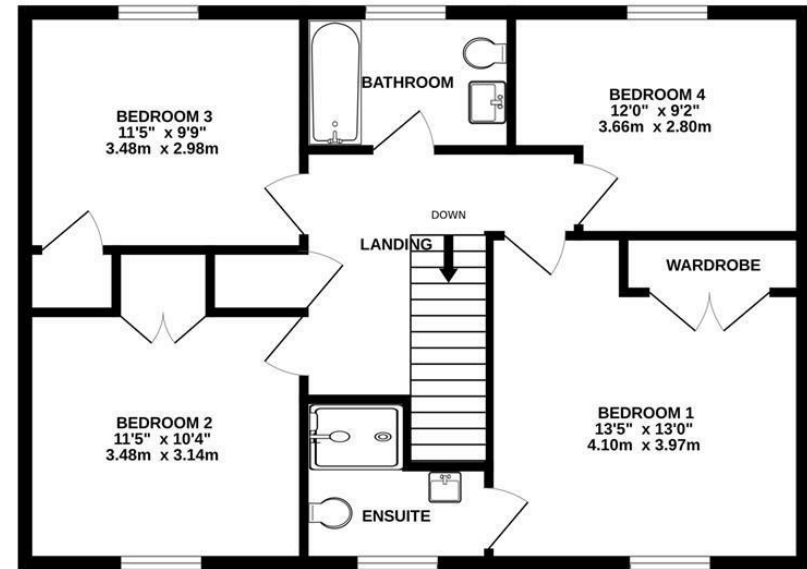
Agents Note: There is a Maintenance charge of approximately £496 pa
Energy Performance Rating B
Council Tax Band F



GROUND FLOOR
733 sq.ft. (68.1 sq.m.) approx.



1ST FLOOR
723 sq.ft. (67.2 sq.m.) approx.



TOTAL FLOOR AREA : 1457 sq.ft. (135.4 sq.m.) approx.

Whilst every attempt has been made to ensure the accuracy of the floorplan contained here, measurements of doors, windows, rooms and any other items are approximate and no responsibility is taken for any error, omission or mis-statement. This plan is for illustrative purposes only and should be used as such by any prospective purchaser. The services, systems and appliances shown have not been tested and no guarantee as to their operability or efficiency can be given.
Made with Metropix ©2024

These particulars are believed to be correct but their accuracy is not guaranteed and they do not form part of any contract. Whilst every effort is made to ensure the accuracy of these details, it should be noted that the above measurements are approximate only. Floorplans are for representation purposes only and prepared according to the RICS Code of Measuring Practice by our floorplan provider. Therefore, the layout of doors, windows and rooms are approximate and should be regarded as such by any prospective purchaser. Any internal photographs are intended as a guide only and it should not be assumed that any of the furniture/ fittings are included in any sale. Where shown, details of lease, ground rent and service charge are provided by the vendor and their accuracy cannot be guaranteed, as the information may not have been verified and further checks should be made either through your solicitor/conveyancer or by referring to the home information pack for this property. Where appliances, including central heating, are mentioned, it cannot be assumed that they are in working order, as they have not been tested. Please also note that wiring, plumbing and drains have not been checked.

Local expertise with powerful national marketing

EDWARDS
E S T A T E A G E N T S



Ferndown Office

404 Ringwood Road, Ferndown, Dorset, BH22 9AU • www.edwardstates.com
01202 855595