

Local expertise with powerful national marketing

EDWARDS
ESTATE AGENTS

RINGWOOD ROAD

, BH24 2SB



ASKING PRICE £350,000

CASH BUYERS ONLY – SOLD AS SEEN – REQUIRES SUBSTANTIAL MODERNISATION/INVESTMENT - This detached chalet-style house presents a remarkable opportunity for CASH BUYERS seeking a PROJECT WITH SIGNIFICANT POTENTIAL. Currently configured as a four-bedroom residence with two reception rooms, the property is set on a GENEROUS PLOT and boasts AMPLE PARKING space for many vehicles, making it ideal for those with multiple cars or for POTENTIAL COMMERCIAL USE.

While the property requires substantial modernisation and investment, it offers a blank canvas for creative minds to transform it into a stunning family home or a lucrative commercial venture, subject to planning permission. The existing layout includes two bathrooms and a number of garages and workshop, providing additional versatility for various uses.

This property is being sold as seen, and it is important to note that it is not believed to be mortgageable, thus appealing exclusively to cash buyers. The location is convenient, with easy access to local amenities and transport links, enhancing its attractiveness for future development.

For those with vision and ambition, this property represents a unique chance to create something truly special. We invite interested parties to contact our office for further details and to arrange a viewing. Don't miss out on this exceptional opportunity to invest in a property with great potential.

Additional Information

Energy Performance Rating: C

Council Tax Band: F

Tenure: Freehold

Accessibility / Adaptations: Lateral living

Flood Risk: No but refer to gov.uk, check long term flood risk

Conservation area: No

Listed building: No

Tree Preservation Order: No

Parking: Driveway private and detached garages

Utilities: Mains Electricity, Mains Gas, Mains Water

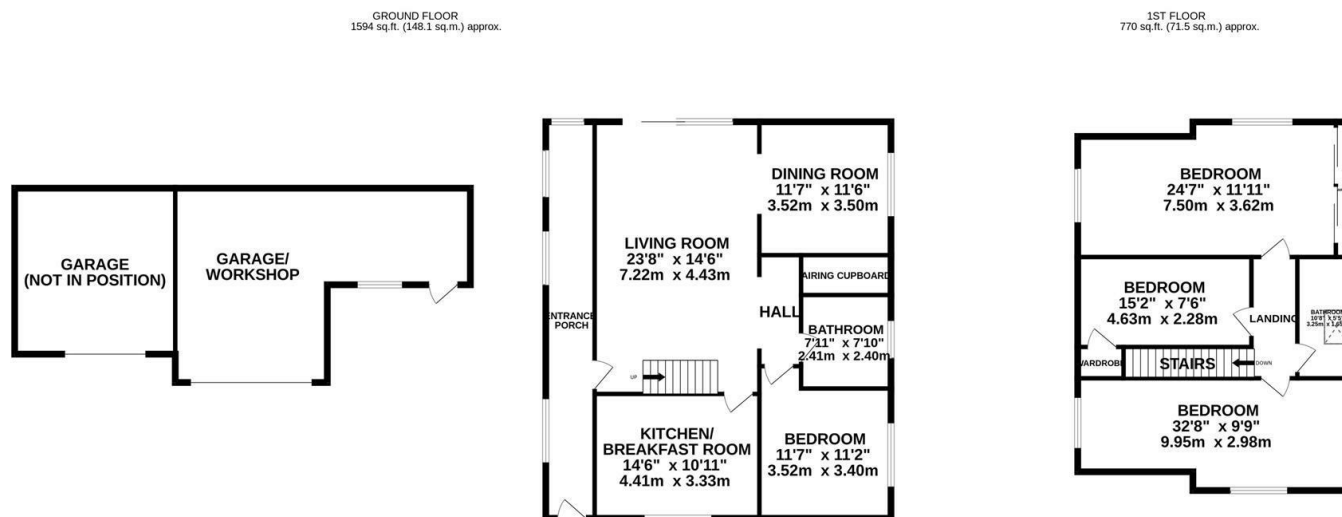
Drainage: Septic tank

Broadband: Refer to Ofcom website

Mobile Signal: Refer to Ofcom website



Local expertise with powerful national marketing



TOTAL FLOOR AREA: 2364 sq.ft. (219.6 sq.m.) approx.

Whilst every attempt has been made to ensure the accuracy of the floorplan contained here, measurements of doors, windows, rooms and any other items are approximate and no responsibility is taken for any error, omission or mis-statement. This plan is for illustrative purposes only and should be used as such by any prospective purchaser. The services, systems and appliances shown have not been tested and no guarantee as to their operability or efficiency can be given.
Made with Metropix ©2024

Ferndown Office

404 Ringwood Road, Ferndown, Dorset, BH22 9AU • www.edwardstates.com
01202 855595

EDWARDS
ESTATE AGENTS

These particulars are believed to be correct but their accuracy is not guaranteed and they do not form part of any contract. Whilst every effort is made to ensure the accuracy of these details, it should be noted that the above measurements are approximate only. Floorplans are for representation purposes only and prepared according to the RICS Code of Measuring Practice by our floorplan provider. Therefore, the layout of doors, windows and rooms are approximate and should be regarded as such by any prospective purchaser. Any internal photographs are intended as a guide only and it should not be assumed that any of the furniture/ fittings are included in any sale. Where shown, details of lease, ground rent and service charge are provided by the vendor and their accuracy cannot be guaranteed, as the information may not have been verified and further checks should be made either through your solicitor/conveyancer or by referring to the home information pack for this property. Where appliances, including central heating, are mentioned, it cannot be assumed that they are in working order, as they have not been tested. Please also note that wiring, plumbing and drains have not been checked.