

Local expertise with powerful national marketing

EDWARDS
ESTATE AGENTS

COLIN CLOSE
WIMBORNE, BH21 3QG



£1,750 PER MONTH

- Detached bungalow
- Two double bedrooms
- Two receptions
- Large Garden
- Unfurnished
- Versatile Accommodation
- Garage and driveway

A detached two / three bedroom bungalow. This versatile two bedroom bungalow which could allow a third bedroom using partition doors, also benefits from conservatory, large garden, garage and driveway.

The property comprises a entrance hall with storage cupboard, two good sized double bedrooms with fitted wardrobes / cupboards, a shower room with walk in shower, kitchen with ample units, electric oven and hob, space for a washing machine, dishwasher and fridge freezer.

The living space of this bungalow offers a versatile range of uses. Originally arranged as two rooms with their own doors from the hallway, they have now been adjoined by an archway with double pocket doors which allow the rooms to be separated allowing a third bedroom to be created, or open creating a larger reception space. Sliding patio doors lead from the rear reception room out to a conservatory overlooking the gardens.



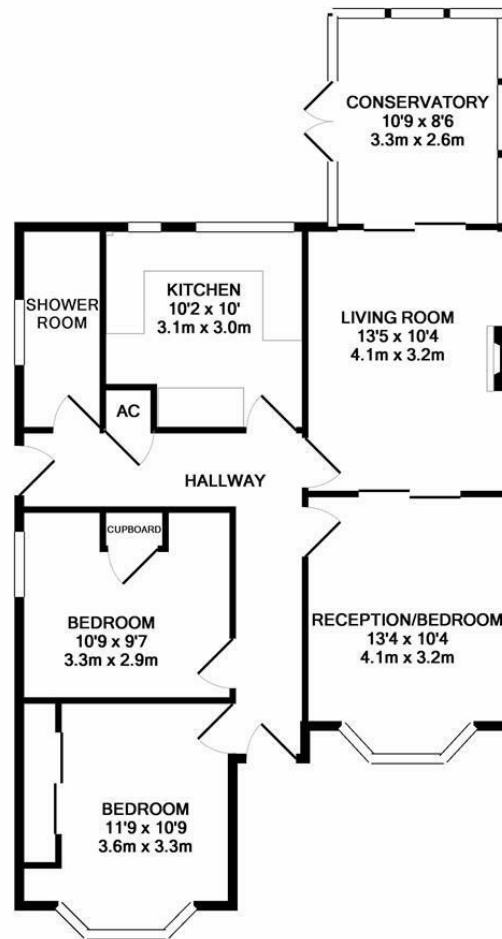
The gardens are a particular feature of this property mainly laid to lawn with mature hedge and shrub borders, they extend to approximately a 1/4 of an acre. There is a driveway which leads down the side of the bungalow which leads to the detached garage.

Please note there is a second garage / store which is not included in the let. The Landlords will retain the use of this for storage and will require occasional access with prior notice.









COLIN CLOSE, CORFE MULLEN, WIMBORNE, DORSET, BH21 3QG
TOTAL APPROX. FLOOR AREA 833 SQ.FT. (77.4 SQ.M.)

Whilst every attempt has been made to ensure the accuracy of the floor plan contained here, measurements of doors, windows, rooms and any other items are approximate and no responsibility is taken for any error, omission, or mis-statement. This plan is for illustrative purposes only and should be used as such by any prospective purchaser. The services, systems and appliances shown have not been tested and no guarantee as to their operability or efficiency can be given.
Made with Metropix ©2017

These particulars are believed to be correct but their accuracy is not guaranteed and they do not form part of any contract. Whilst every effort is made to ensure the accuracy of these details, it should be noted that the above measurements are approximate only. Floorplans are for representation purposes only and prepared according to the RICS Code of Measuring Practice by our floorplan provider. Therefore, the layout of doors, windows and rooms are approximate and should be regarded as such by any prospective purchaser. Any internal photographs are intended as a guide only and it should not be assumed that any of the furniture/ fittings are included in any sale. Where shown, details of lease, ground rent and service charge are provided by the vendor and their accuracy cannot be guaranteed, as the information may not have been verified and further checks should be made either through your solicitor/conveyancer or by referring to the home information pack for this property. Where appliances, including central heating, are mentioned, it cannot be assumed that they are in working order, as they have not been tested. Please also note that wiring, plumbing and drains have not been checked.

Local expertise with powerful national marketing

EDWARDS
ESTATE AGENTS

Ferndown, Dorset BH22 9AU

01202 039918

www.edwardstates.co.uk