

*Local expertise with powerful national marketing*

EDWARDS  
ESTATE AGENTS

UPPER TERRACE ROAD

BOURNEMOUTH, BH2 5EA







# £1,500 PER MONTH

- Incredible Town Apartment
- Large Private Terrace
- Private Second Entrance
- 2 Large Bedrooms
- 2 Bath / Shower Rooms
- Open Plan Kitchen
- Secured Parking

Ground floor modern apartment benefitting from its own terrace, fully-fitted kitchen with range of comprehensive fitted units.

Designed around the modern way of life; the kitchen / breakfast room seamlessly flows into a comfortable open plan living area that has access to the terrace. Both bedrooms are large doubles, while the master suite benefitting from an en-suite shower room.

Further benefitting from two unique entrances; the first of which from your own private front door and entrance hall, and another direct from the car park. Parking is via a remotely operated barrier where an allocated parking space can be found.

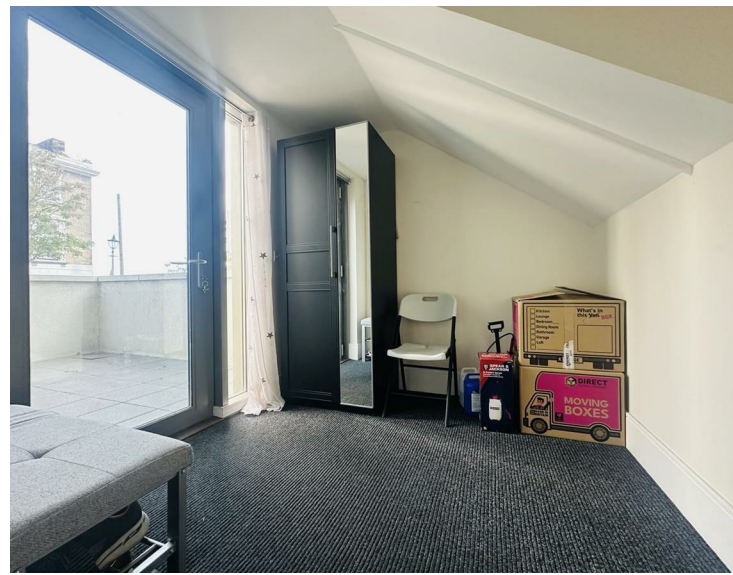
The Summit occupies an enviable position upon the site of the Hilton Bournemouth. This incredible location makes walking into Bournemouth's ornamental gardens and the BH2 leisure complex a two minute walk! It is also only a short walk to the beach too, perfect all year round. Plus many events such as music by the pier and the air festival. The



mainline train station and international airport are approximately 1 & 7 miles distant respectively



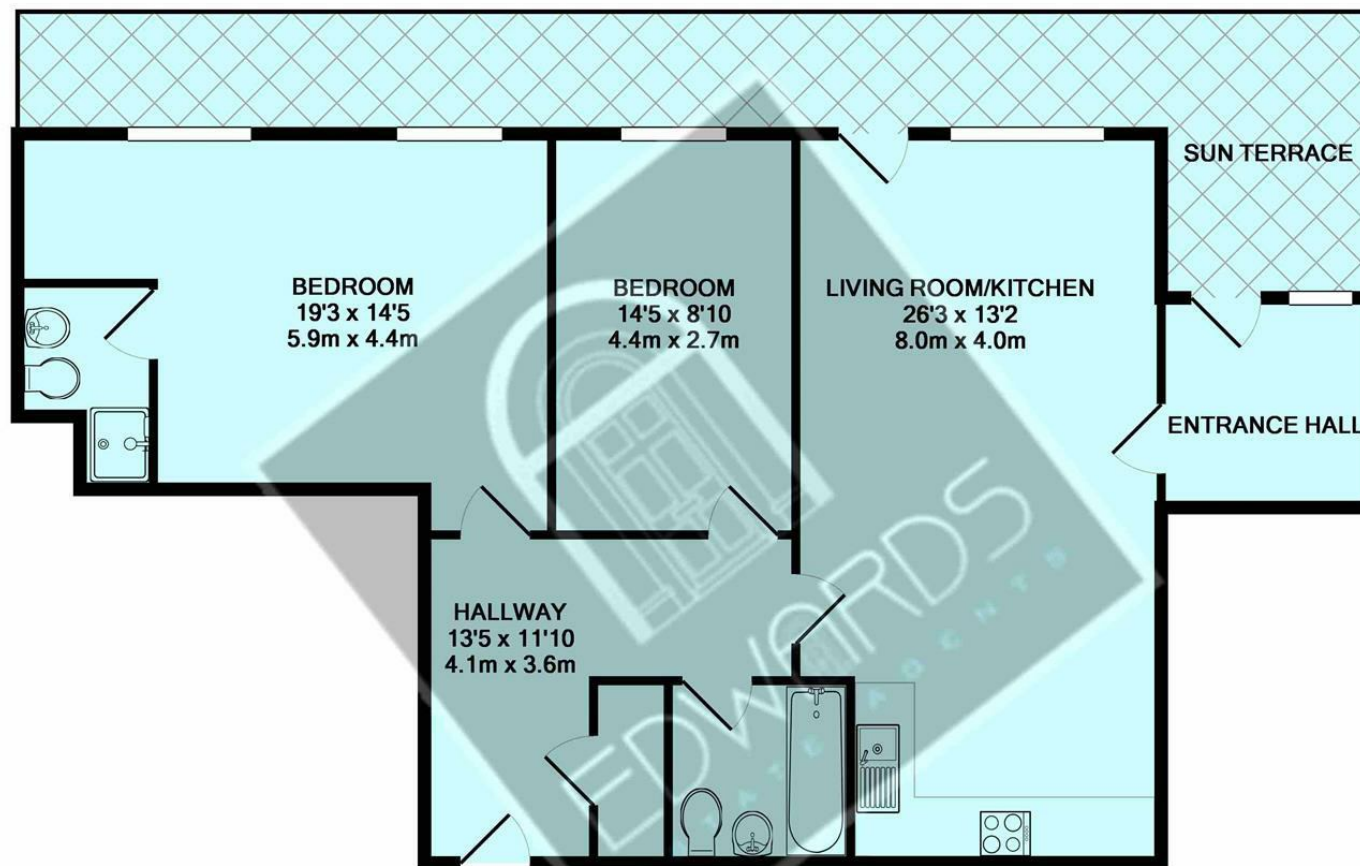












TOTAL APPROX. FLOOR AREA 935 SQ.FT. (86.9 SQ.M.)

Whilst every attempt has been made to ensure the accuracy of the floor plan contained here, measurements of doors, windows, rooms and any other items are approximate and no responsibility is taken for any error, omission, or mis-statement. This plan is for illustrative purposes only and should be used as such by any prospective purchaser. The services, systems and appliances shown have not been tested and no guarantee as to their operability or efficiency can be given  
Made with Metropix ©2018

These particulars are believed to be correct but their accuracy is not guaranteed and they do not form part of any contract. Whilst every effort is made to ensure the accuracy of these details, it should be noted that the above measurements are approximate only. Floorplans are for representation purposes only and prepared according to the RICS Code of Measuring Practice by our floorplan provider. Therefore, the layout of doors, windows and rooms are approximate and should be regarded as such by any prospective purchaser. Any internal photographs are intended as a guide only and it should not be assumed that any of the furniture/ fittings are included in any sale. Where shown, details of lease, ground rent and service charge are provided by the vendor and their accuracy cannot be guaranteed, as the information may not have been verified and further checks should be made either through your solicitor/conveyancer or by referring to the home information pack for this property. Where appliances, including central heating, are mentioned, it cannot be assumed that they are in working order, as they have not been tested. Please also note that wiring, plumbing and drains have not been checked.

*Local expertise with powerful national marketing*



Ferndown, Dorset BH22 9AU

01202 039918

[www.edwardstates.co.uk](http://www.edwardstates.co.uk)