

MALOREN WAY
FERNDOWN, BH22 0BQ



GUIDE PRICE £380,000

This DETACHED BUNGALOW is set on a CORNER PLOT and has been thoughtfully remodelled by the current owners. It boasts THREE WELL-PROPORTIONED BEDROOMS and is designed to cater to a variety of living arrangements.

As you enter, you are greeted by a welcoming entrance hall featuring two built-in storage cupboards and a hatchway leading to the roof space. The spacious living room boasts a large window that overlooks an enclosed section of the lawned garden. Adjacent to the living area is a versatile playroom, ideal for.

A large archway leads to the dual aspect kitchen is a highlight of the home, fitted with modern units and coordinating worktops and is well-equipped with space and plumbing for a dishwasher, a tall fridge/freezer, an integrated electric ceramic hob with a cooker hood and eye-level electric oven/grill. There is also ample space for a breakfast table and chairs.

The large, fully tiled bathroom features a corner bath, a separate shower enclosure, WC, and a washbasin, complete with a wall mirror, light, shaver point, and extractor fan.

Outside, the garden offers a variety of enclosed areas, including a formal garden with lawn and borders, a courtyard, and a paved area adjacent to the garage and driveway.

Additional Information

Energy Performance Rating: D

Council Tax Band: D

Tenure: Freehold

Accessibility / Adaptations: Lateral living

Flood Risk: Very low but refer to gov.uk, check long term flood risk

Flooded in the last 5 years: No

Conservation area: No

Listed building: No

Tree Preservation Order: No

Parking: Private driveway & garage

Utilities: Mains electricity, mains gas, mains water

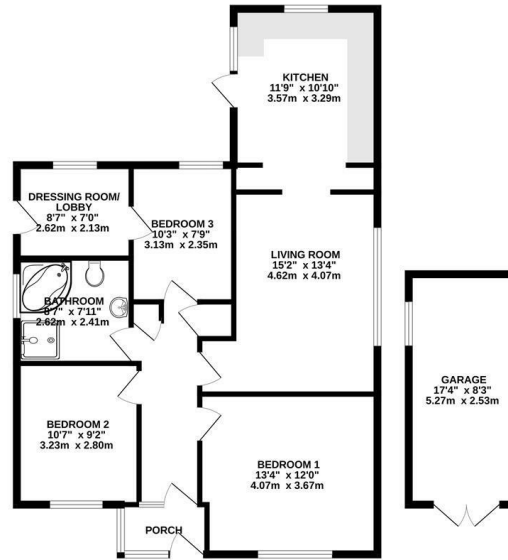
Drainage: Mains sewerage

Broadband: Refer to Ofcom website

Mobile Signal: Refer to Ofcom website



GROUND FLOOR
1032 sq.ft. (95.9 sq.m.) approx.



TOTAL FLOOR AREA: 1032 sq.ft. (95.9 sq.m.) approx.
Whilst every attempt has been made to ensure the accuracy of the floorplan contained herein, measurements of floors, walls, ceilings, stairs and other items are approximate and no responsibility is taken for any error or omission of the measurements. The floor plan is an approximate guide only and should be used as a guide only. Prospective purchasers should verify the measurements and details of the property and their accuracy cannot be guaranteed. Made with Metaplan (2022)

Ferndown Office

404 Ringwood Road, Ferndown, Dorset, BH22 9AU • www.edwardstates.com
01202 855595

EDWARDS
ESTATE AGENTS

These particulars are believed to be correct but their accuracy is not guaranteed and they do not form part of any contract. Whilst every effort is made to ensure the accuracy of these details, it should be noted that the above measurements are approximate only. Floorplans are for representation purposes only and prepared according to the RICS Code of Measuring Practice by our floorplan provider. Therefore, the layout of doors, windows and rooms are approximate and should be regarded as such by any prospective purchaser. Any internal photographs are intended as a guide only and it should not be assumed that any of the furniture/ fittings are included in any sale. Where shown, details of lease, ground rent and service charge are provided by the vendor and their accuracy cannot be guaranteed, as the information may not have been verified and further checks should be made either through your solicitor/conveyancer or by referring to the home information pack for this property. Where appliances, including central heating, are mentioned, it cannot be assumed that they are in working order, as they have not been tested. Please also note that wiring, plumbing and drains have not been checked.