



EDWARDS  
ESTATE AGENTS



1 RICHMOND HILL DRIVE  
DORSET, BH2 6LT



# £1,300 PER MONTH

- Town centre apartment
- Two double bedrooms
- En suite to the master
- Westerly facing balcony
- Video entry phone system
- Secure parking
- Unfurnished

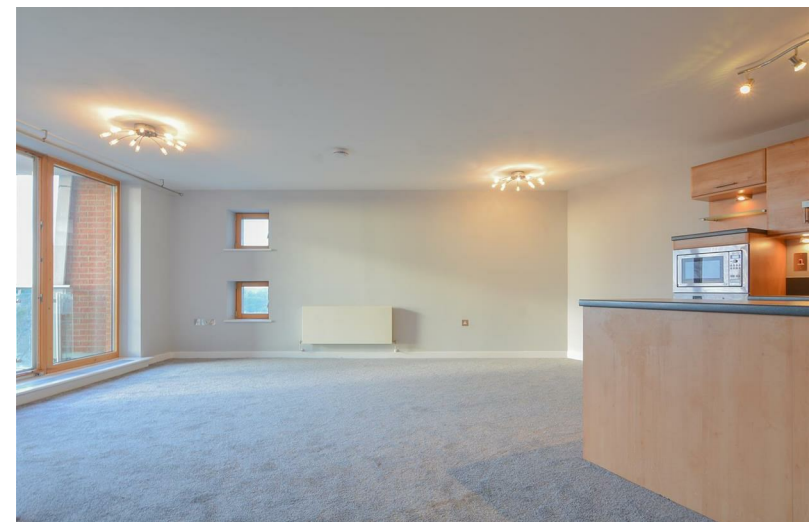
This apartment commands fantastic and interesting far reaching views west, over Bournemouth toward Westbourne.

Features include two well-proportioned double bedrooms, the master encompassing a generous built-in wardrobe and en suite shower room, a westerly facing balcony, a modern family bathroom, video entry phone system and secure parking.

The property further benefits from a fitted kitchen with oven, hob, filter hood, dishwasher, washer / dryer and fridge and freezer.

The double aspect open plan kitchen/dining/sitting room offers a very light and spacious living space. This apartment and main balcony is perfectly positioned to enjoy the summer firework displays at Poole Quay

Richmond Hill Gate is a Town Centre development of ninety apartments. It dominates a position at the top of Richmond Hill allowing this apartment superb elevated views of

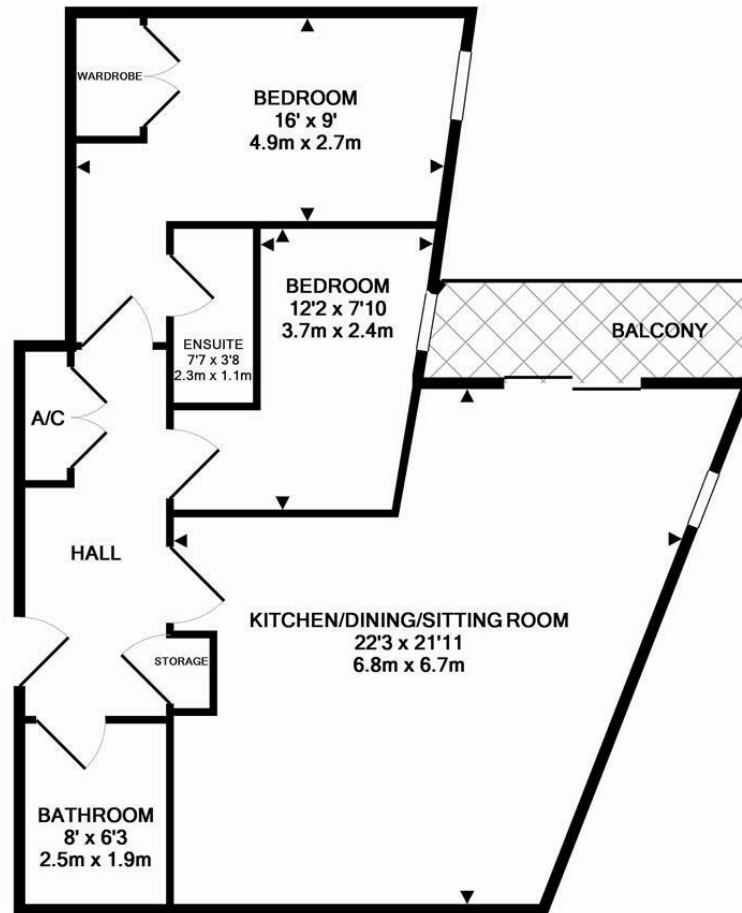


Bournemouth, the sea and beyond. Bournemouth's famous award winning sandy beach and Pier are approximately half a mile away with the train and bus station being within one mile.









TOTAL APPROX. FLOOR AREA 842 SQ.FT. (78.2 SQ.M.)

Whilst every attempt has been made to ensure the accuracy of the floor plan contained here, measurements of doors, windows, rooms and any other items are approximate and no responsibility is taken for any error, omission, or mis-statement. This plan is for illustrative purposes only and should be used as such by any prospective purchaser. The services, systems and appliances shown have not been tested and no guarantee as to their operability or efficiency can be given  
 Made with Metropix ©2015

These particulars are believed to be correct but their accuracy is not guaranteed and they do not form part of any contract. Whilst every effort is made to ensure the accuracy of these details, it should be noted that the above measurements are approximate only. Floorplans are for representation purposes only and prepared according to the RICS Code of Measuring Practice by our floorplan provider. Therefore, the layout of doors, windows and rooms are approximate and should be regarded as such by any prospective purchaser. Any internal photographs are intended as a guide only and it should not be assumed that any of the furniture/ fittings are included in any sale. Where shown, details of lease, ground rent and service charge are provided by the vendor and their accuracy cannot be guaranteed, as the information may not have been verified and further checks should be made either through your solicitor/conveyancer or by referring to the home information pack for this property. Where appliances, including central heating, are mentioned, it cannot be assumed that they are in working order, as they have not been tested. Please also note that wiring, plumbing and drains have not been checked.

EDWARDS  
ESTATE AGENTS

Ferndown, Dorset BH22 9AU

01202 039918

[www.edwardstates.co.uk](http://www.edwardstates.co.uk)