

A photograph of a two-story house with a gravel driveway, a large tree, and a hedge. The house has a light-colored upper half and a brick lower half. A large tree is on the right, and a hedge is on the left. The sky is overcast.

EDWARDS  
ESTATE AGENTS

NEW ROAD  
FERNDOWN, BH22 8EE



# £3,000 PER MONTH

---

- DETACHED CHALET IN WEST PARLEY
- FIVE BEDROOMS
- OPEN PLAN LIVING
- TWO ENSUITES AND FAMILY BATHROOM
- EXTENSIVELY REFURBISHED THROUGHOUT
- DOUBLE GARAGE AND AMPLE OFF ROAD PARKING
- GARDENS TO FRONT AND REAR
- AVAILABLE END APRIL 2026
- SEASONAL GARDENER INCLUDED
- NB - GARDEN LANDSCAPING YET TO BE COMPLETED

Nestled in the charming area of New Road, West Parley, Ferndown, this impressive detached chalet offers a perfect blend of space and comfort. With five generously sized bedrooms, this property is ideal for families seeking room to grow or those who enjoy hosting guests. Two of the bedrooms benefit from ensuite shower rooms, providing added convenience and privacy, while a well-appointed family bathroom caters to the needs of the household.

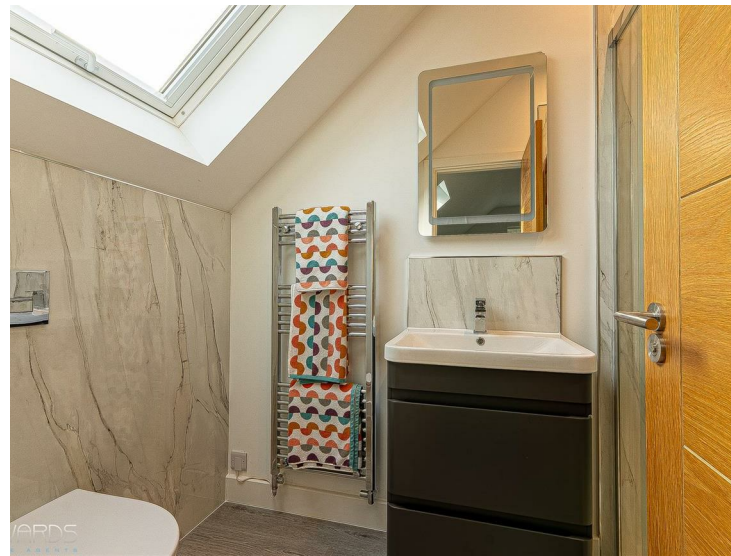
The property boasts a large frontage, and a good-sized back garden, perfect for outdoor activities, gardening, or simply enjoying the fresh air. The outdoor space offers a wonderful opportunity for relaxation and entertainment, making it a delightful retreat.

Within this rental a seasonal gardener will be provided.



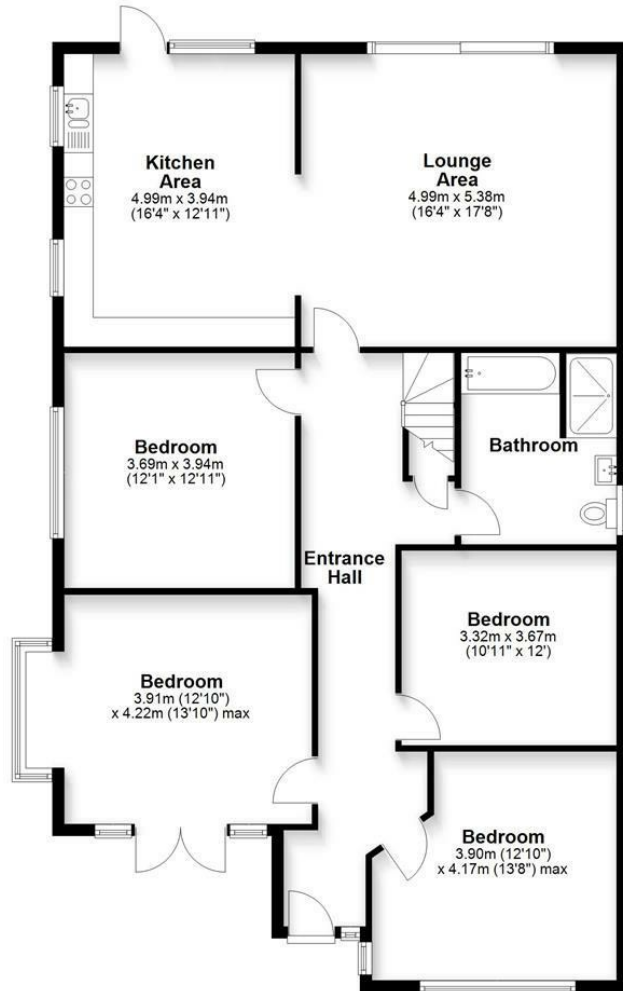
Additionally, the double garage provides ample storage and parking space, ensuring that your vehicles and belongings are secure. This home is not only spacious but also thoughtfully designed to accommodate modern living.

With its desirable location in West Parley, residents can enjoy a peaceful suburban lifestyle while still being within easy reach of local amenities and transport links. This property is a rare find and presents an excellent opportunity for those looking to settle in a welcoming community. Do not miss the chance to make this splendid chalet your new home.



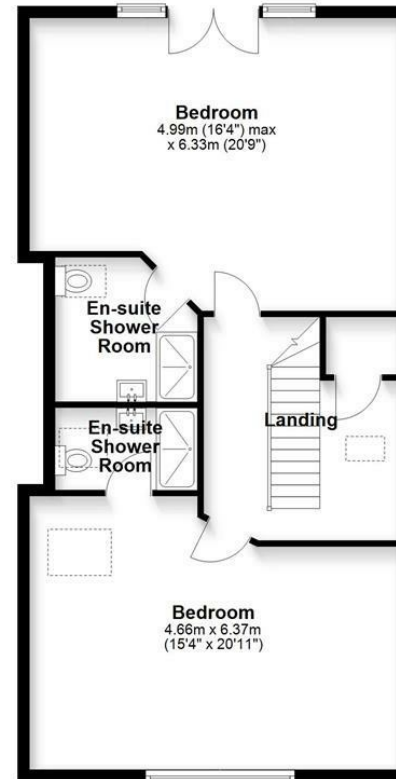
### Ground Floor

Approx. 136.7 sq. metres (1471.3 sq. feet)



### First Floor

Approx. 79.2 sq. metres (852.6 sq. feet)



Total area: approx. 215.9 sq. metres (2323.8 sq. feet)

Bournemouth Energy Floor Plans are provided for illustration/identification purposes only. Not drawn to scale, unless stated and accept no responsibility for any error, omission or mis-statement. Dimensions shown are to the nearest 7.5 cm / 3 inches. Total approx area shown on the plan may include any external terraces, balconies and other external areas. To find out more about Bournemouth Energy please visit [www.bournemouthenergy.co.uk](http://www.bournemouthenergy.co.uk) (Tel: 01202 556006)  
Plan produced using PlanUp.

These particulars are believed to be correct but their accuracy is not guaranteed and they do not form part of any contract. Whilst every effort is made to ensure the accuracy of these details, it should be noted that the above measurements are approximate only. Floorplans are for representation purposes only and prepared according to the RICS Code of Measuring Practice by our floorplan provider. Therefore, the layout of doors, windows and rooms are approximate and should be regarded as such by any prospective purchaser. Any internal photographs are intended as a guide only and it should not be assumed that any of the furniture/ fittings are included in any sale. Where shown, details of lease, ground rent and service charge are provided by the vendor and their accuracy cannot be guaranteed, as the information may not have been verified and further checks should be made either through your solicitor/conveyancer or by referring to the home information pack for this property. Where appliances, including central heating, are mentioned, it cannot be assumed that they are in working order, as they have not been tested. Please also note that wiring, plumbing and drains have not been checked.

## Lettings Office

404 Ringwood Road, Ferndown, Dorset, BH22 9AU • [www.edwardstates.com](http://www.edwardstates.com)  
01202 039918